



665 King's Road, North Point, Hong Kong
 (MTR Quarry Bay Station, Exit C)
 Website: www.harbour-plaza.com/hpnp

Harbour Plaza North Point
 (Owned by Sunrich Investment Limited)
 A member of Harbour Plaza Hotels and Resorts

BAR & RESTAURANTS



Hoi Yat Heen Chinese Restaurant (3/F)
 An award-winning Chinese restaurant offers delectable dim sum and Chinese cuisines from Canton, Shanghai, Sichuan and Yunnan. It's innovative "Dim Sum and Dessert Combo" had been honoured Silver Award in the Dim Sum Category in "Best of the Best Culinary Awards" by the Hong Kong Tourism Board.




Greens Café (2/F)
 An All-day dining restaurant provides bountiful buffets and an extensive international menu in a relaxing atmosphere.




The Point Lobby Lounge (2/F)
 Located on hotel lobby floor, offers all kinds of fine wines and exquisite snacks with live entertainment, an ideal venue for happy hour or a sports broadcast rendezvous.




Java Mama Deli Corner (1/F)
 Amazing choices of custom-made sandwiches, fresh salads and nutritious light meals.

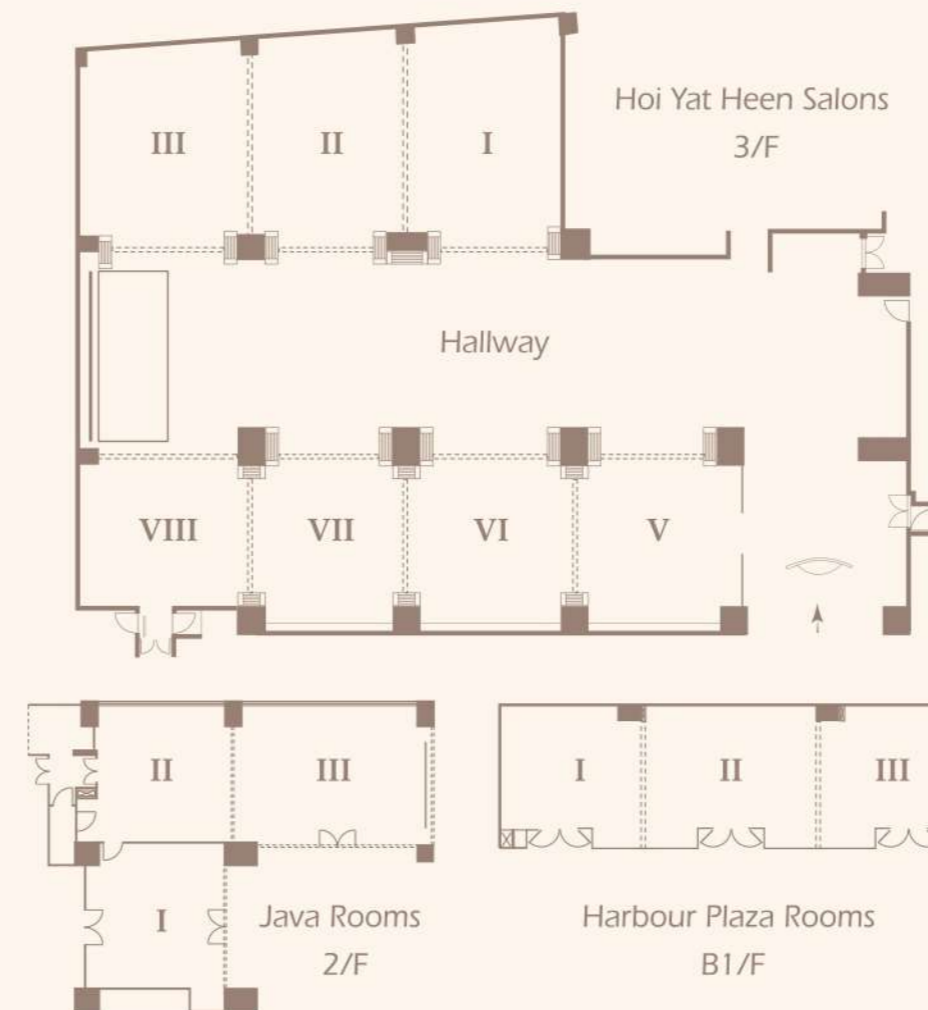


MEETING AND BANQUET FACILITIES

Versatile function rooms are available on Basement One, Greens Café (2/F) and Hoi Yat Heen Salons (3/F) that are ideal to cater 15 – 550 persons' business meetings or social functions.



FLOOR PLAN



CAPACITY CHART

Venue	Sq. ft.	Sq. m.	Length		Width		Height	
			Feet	Metre	Feet	Metre	Feet	Metre
Hoi Yat Heen Salons	7,505	696	95	29	79	24	13	4
Java I	485	45	22	6.7	22	6.7	10	3
Java II & III	1,040	96	52	16	20	6	10	3
Harbour Plaza Rooms	1,160	108	61	18.6	19	5.8	9	2.7

Venue	Classroom	Theatre	Boardroom	U-shape	Buffet	Cocktail	Round Table
Hoi Yat Heen Salons	192	556	190#	180Δ	300	500	456
Java I	18	50	20	18	24	40	36
Java II & III	54	96	50	44	60	80	72
Harbour Plaza Rooms	60	130	50	44	72	110	72

Combination of 3 square boardroom tables Δ Combination of 3 U-shaped tables

HARBOUR PLAZA NORTH POINT



Convenient Location

Harbour Plaza North Point is located in between the bustling Causeway Bay and commercial hub Quarry Bay. It is just one-minute walking distance to MTR Quarry Bay Station (Exit C) and five-minute distance by hotel complimentary scheduled shuttle bus to the renowned shopping centre "Cityplaza" with over 160 international branded shops and restaurants and office complex of Taikoo Place.



GUEST SERVICES AND FACILITIES

- 25-meter outdoor swimming pool (closed in winter)
- Well-equipped fitness centre with sauna, solarium and massage service
- Non-smoking floors
- Complimentary hotel shuttle bus service to Taikoo Place office complex and Cityplaza Shopping Centre
- Complimentary scheduled shuttle bus service to Hong Kong Convention & Exhibition Centre on selected trade fairs
- Limousine service
- Valet Parking service
- Private dining service
- Business Centre
- 24-hour professional security & surveillance cameras
- 24-hour hotel concierge and front desk service
- Valet laundry and dry cleaning service
- Baby-sitting service
- Postal service and mail delivery
- Currency exchange



MONTHLY SERVICED SUITES

Monthly Serviced Suites are categorized into Studio, One - Bedroom Suite and Two - Bedroom Suite. They are well equipped with open kitchen or kitchen. The full hotel service with flexible leasing terms, no utility and maintenance cost are definitely your ideal "HOME AWAY FROM HOME".

In addition to the above features, Serviced Suites also come with:

- Housekeeping maid service (twice a week)
- Towel & linen service (twice a week)
- Refrigerator & microwave oven
- Double hot-plate & exhaust ventilation system
- Basic cooking utensils, Chinawares and cutlery
- Direct phone number (upon request)
- Free local calls
- Individually controlled air-conditioning
- Broadband or Wi-Fi Internet connection
- Access to self-service coin-laundry room



PREMIER ROOMS

Tastefully appointed, **Premier Rooms** are the epitome of urban dwelling with elegance, offering spectacular harbour views or a bright, ample hillside view. The clean and sleek rooms combine comfort living with classy and refined decor featuring designer chairs and an artistic feature wall, giving guests' stay a stylish yet homey touch.

Premier Plus Rooms are situated on the hotel's top floors, also boasting panoramic views of the iconic Victoria Harbour, or a wide, airy view of the lush greeneries. Guests can relax and enjoy a warm and heart-soothing stay with a series of exclusive privileges.

Premier Plus Room Exclusive Privileges :

- Welcome fruit plate
- Daily local newspaper
- Complimentary buffet breakfast at Greens Café
- Complimentary drinks during Happy Hours at The Point Lobby Lounge
- Complimentary consumption of mini bar items
- Complimentary use of meeting room for 2 hours (subject to availability) and advanced reservation is required
- Complimentary pressing service for 1 suit (2 pieces) per stay
- Free local calls
- 20% discount at Greens Café and Hoi Yat Heen Chinese Restaurant
- 20% discount on services in Business Centre
- 20% discount on massage, facial and solarium service
- 10% discount on laundry and pressing service (except dry cleaning and express service)

Both Premier Room and Premier Plus Room are equipped with a chic chaise longue for guests to sit back and relax, while it can also be transformed into a bed to accommodate an extra accompanying guest for a delightful and cosy stay.



ACCOMMODATION

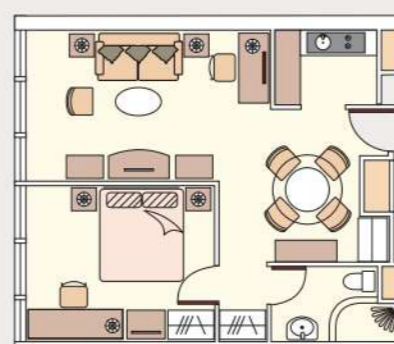
719 tastefully designed guest rooms and serviced suites with City View, Hill View and Harbour View are categorized into various room types of Superior, Deluxe, Studio, Premier and Premier Plus. Side Harbour View Suite and Two-bedroom Suite are also available. All rooms are equipped with:

- Broadband or Wi-Fi internet connection
- Individually controlled air-conditioning
- Bathroom amenities, hair dryer and electronic safe
- IDD telephone system with voicemail service
- 24-hour TV, movie and music channels
- Fully stocked mini bar
- Tea and coffee making facilities

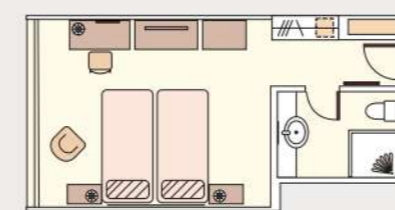
Remarks: All information is subject to change without prior notice



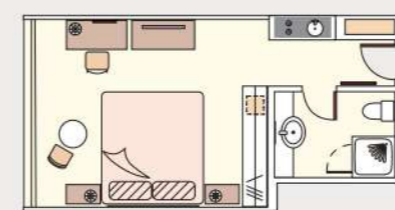
Two-Bedroom Suite
• 900 sq.ft (84 sq.m)



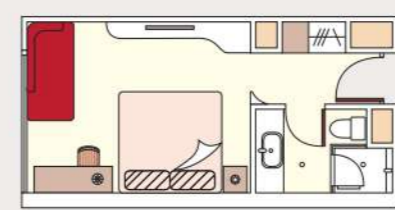
One Bedroom Suite
• 580 sq.ft (54 sq.m)



**Superior Room/
Deluxe Room**
• 290 sq.ft (27 sq.m)



Studio
• 290 sq.ft (27 sq.m)



Premier Room
• 290 sq.ft (27 sq.m)

Remarks: All information is subject to change without prior notice

TRANSPORTATION

From	Time	By
Mass Transit Railway (MTR) Quarry Bay Station "Exit C"	1 min	Walk
Cityflyer A12 (Model Housing Estate, King's Road)	1 min	Walk
Bus Station (Model Housing Estate, King's Road)	1 min	Walk
Tram Station (Java Road)	1 min	Walk
Taikoo Place office complex	3 min	Walk / Shuttle Bus
Cityplaza Shopping Centre	5 min	Shuttle Bus
North Point Ferry Terminal	10 min	Walk
Causeway Bay Shopping District	10 min	MTR / Taxi
Hong Kong Convention & Exhibition Centre	12 min	MTR / Taxi / Shuttle Bus*
Central	15 min	MTR / Taxi
Airport Express Hong Kong Station	15 min	MTR / Taxi / H4#
Ocean Park / Repulse Bay / Stanley Market	20 min	Taxi
Kwun Tong & Tseung Kwan O	20 min	MTR / Taxi
Hong Kong International Airport	45 min	Airport Express / Taxi / Cityflyer A12
Hong Kong Disneyland	45 min	MTR / Taxi
AsiaWorld-Expo	47 min	Airport Express

*Available on selected trade fairs only #By Airport Express