



ROYAL PACIFIC
HOTEL

ARRIVAL TO MODERN RESIDENCE



PRIME LOCATION



ROYAL PACIFIC
HOTEL



Positioned in an enviable harbourside location being right on Canon Road in Tsim Sha Tsui, Royal Pacific Hotel enjoys easy access to Hong Kong's business and retail hubs. All 673 rooms and suites ranging from 22 s.q.m to 145 s.q.m are 100% smoke-free providing clean comfort in a health-conscious environment.

Incredible harbour views elevate our suites. The hotel entertains unparalleled accessibility atop The China Ferry Terminal to Greater Bay Area while being mere minutes from the MTR subway station and High Speed Rail station.

Our celebrated restaurants include Pierside Bar & Restaurant serving contemporary Australian fare, Café on the PARK offering international flavours and magnificent buffets, as well as the authentic Singaporean cuisine restaurant Satay Inn. What's more, indulge in exquisite cakes and pastries at our coffee shop.

HOTEL FEATURES



ROYAL PACIFIC
HOTEL



- 673 rooms and suites
- 4 award-winning restaurants
- 8 meeting venues
- A 24-hour fitness centre
- A business centre and club lounge
- Complimentary selection of beverages available in-room for guests staying in the Towers Wing (conditions apply)



ROYAL PACIFIC
HOTEL

EASY ACCESSIBILITY



Hong Kong International Airport

35 minutes

West Kowloon Terminus (High Speed Rail)

5-minute walk

Airport Express Line

Airport to Kowloon Station: 21 minutes

Kowloon Station to Hotel: 5 minutes by K2 Airport Express shuttle bus

MTR

Tsim Sha Tsui Station (Exit A1): 10-minute walk

Austin Station (Exit F): 10-minute walk

High Speed Rail West Kowloon Terminus: 15-minute walk

Star Ferry Pier

8-minute walk



ROYAL PACIFIC
HOTEL

STYLISH · VIBRANT LIVING

PREMIER ROOM

Hotel Wing, 22sqm, smoke-free



ROYAL PACIFIC
HOTEL

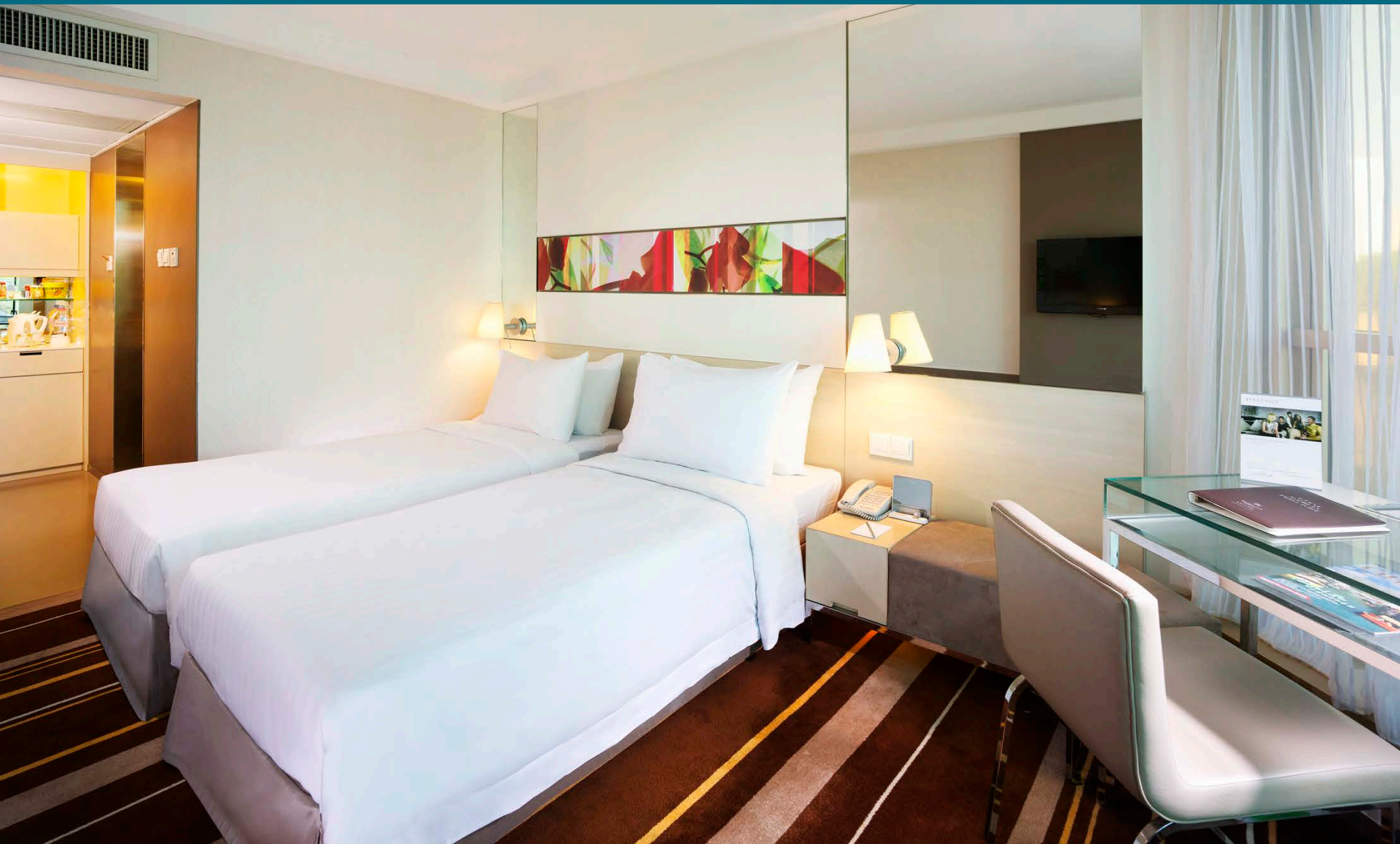


PREMIER PLUS ROOM

Hotel Wing, 22sqm, smoke-free



ROYAL PACIFIC
HOTEL

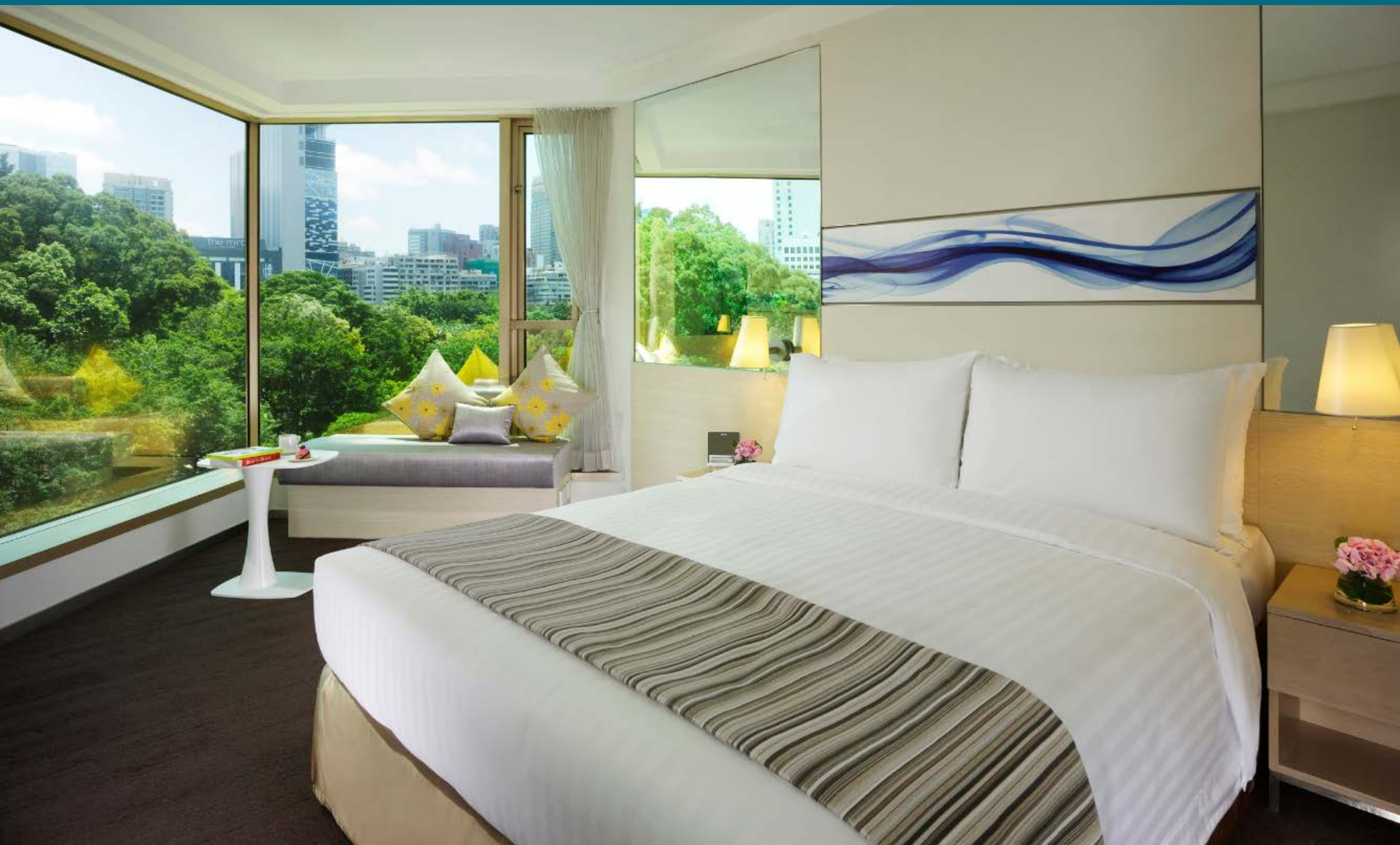


PARK VIEW ROOM

Hotel Wing, 22sqm, smoke-free



ROYAL PACIFIC
HOTEL

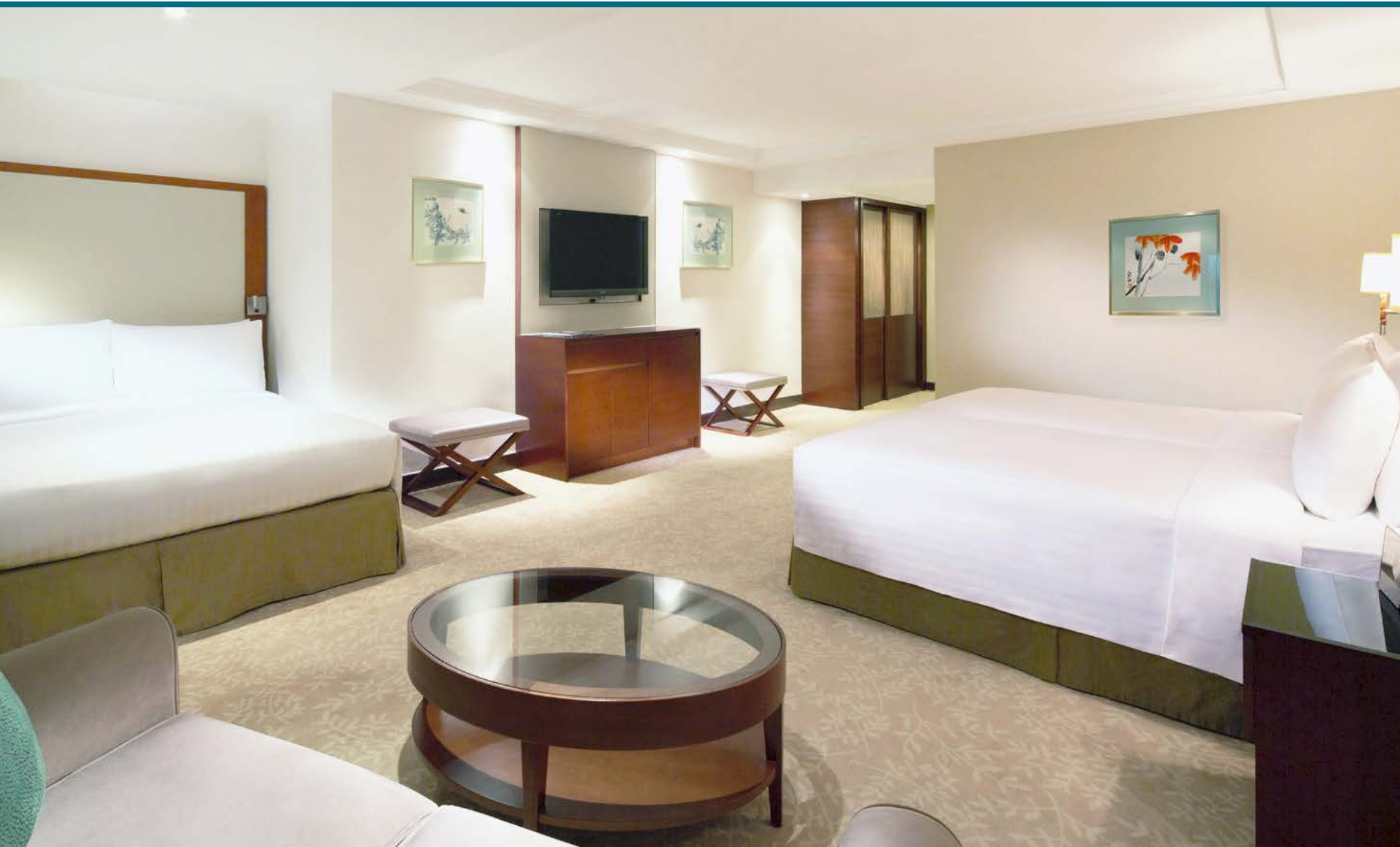


FAMILY SELECTIONS

Towers Wing, 40 – 58sqm, smoke-free



ROYAL PACIFIC
HOTEL

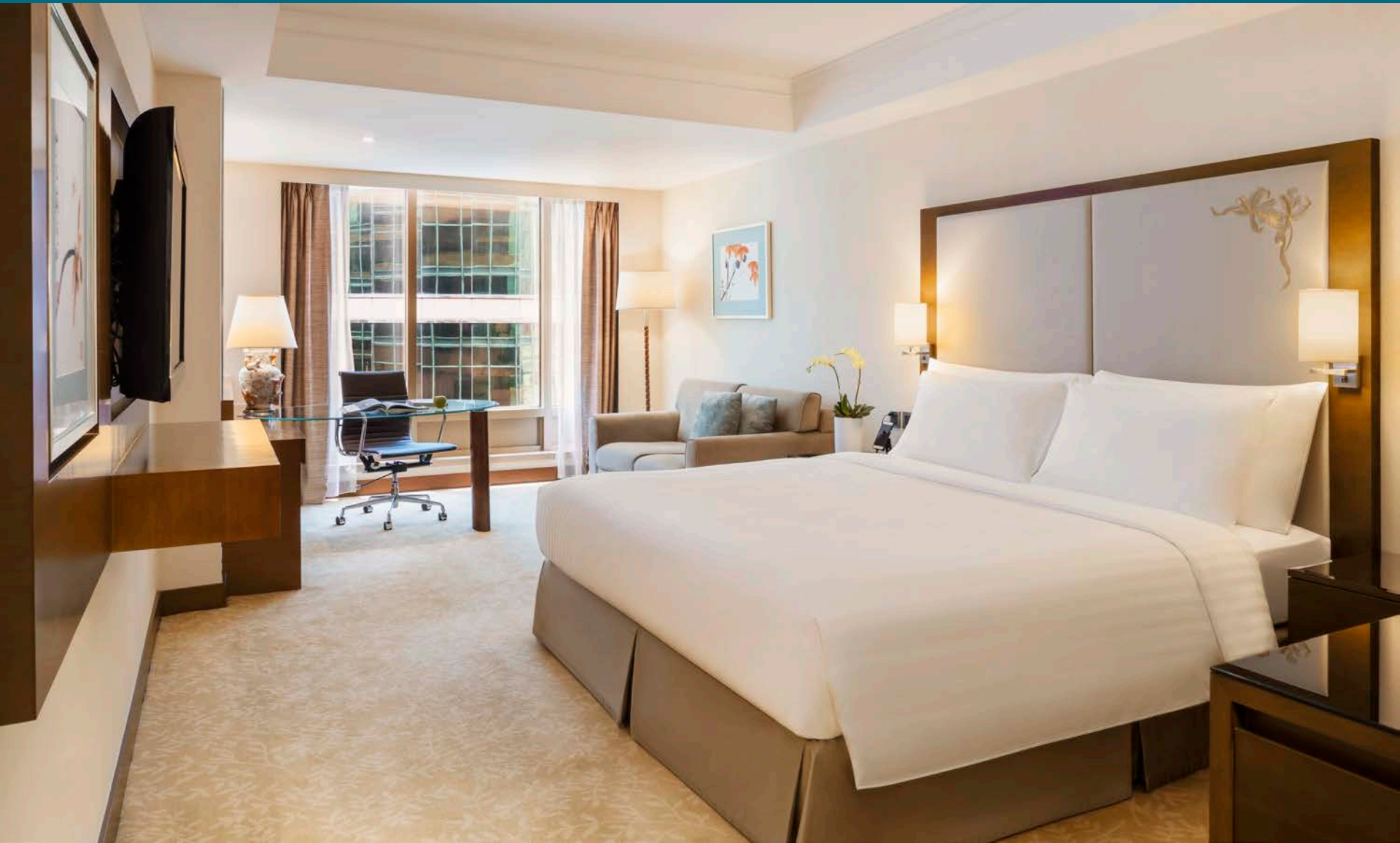


PACIFIC GRAND ROOM

Towers Wing, 35sqm, smoke-free



ROYAL PACIFIC
HOTEL

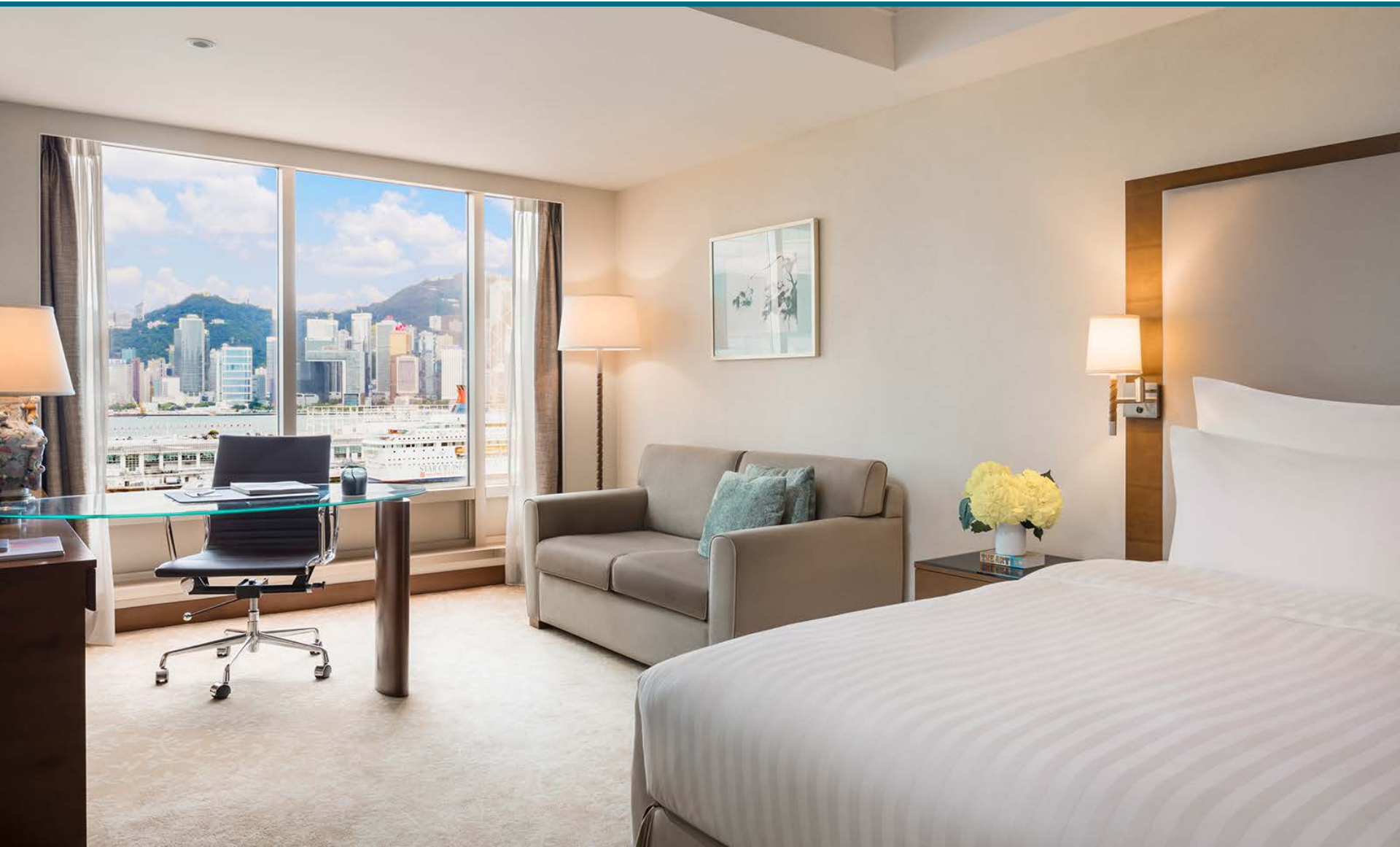


DELUXE HARBOUR VIEW ROOM

Towers Wing, 35sqm, smoke-free



ROYAL PACIFIC
HOTEL



TOWERS HARBOUR SUITE

Towers Wing, 57 – 72sqm, smoke-free



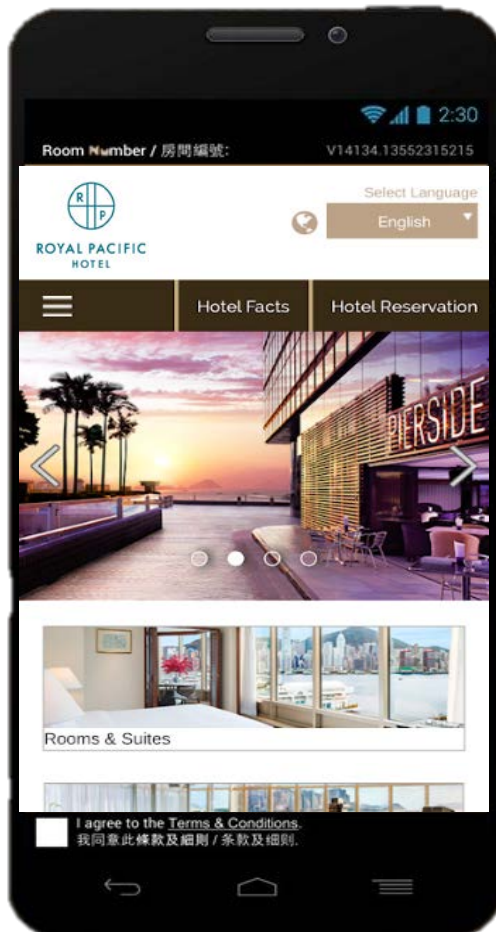
ROYAL PACIFIC
HOTEL



ROOM AMENITIES



ROYAL PACIFIC
HOTEL



- **Free-to-use Smartphone**
(with complimentary local mobile data, hotspot enabling, free IDD calls to 10 selected countries)
- **Tea & coffee making facilities** *(Nespresso coffee machine for staying at The Towers Wing)*
- **Free WiFi access**
(for multiple devices)
- **LCD TV**
- **In-room safe**
- **Iron & ironing board**
- **Bedside reading lighting**



ROYAL PACIFIC
HOTEL

HOTEL FACILITIES

BUSINESS CENTRE · CLUB LOUNGE

19/F Towers Wing



ROYAL PACIFIC
HOTEL



24 HOURS FITNESS CENTRE

11/F Towers Wing



ROYAL PACIFIC
HOTEL





ROYAL PACIFIC
HOTEL

AN ENTICING ARRAY OF DINING EXPERIENCES

CAFÉ ON THE PARK



ROYAL PACIFIC
HOTEL



CAFÉ ON THE PARK

Sumptuous Buffets



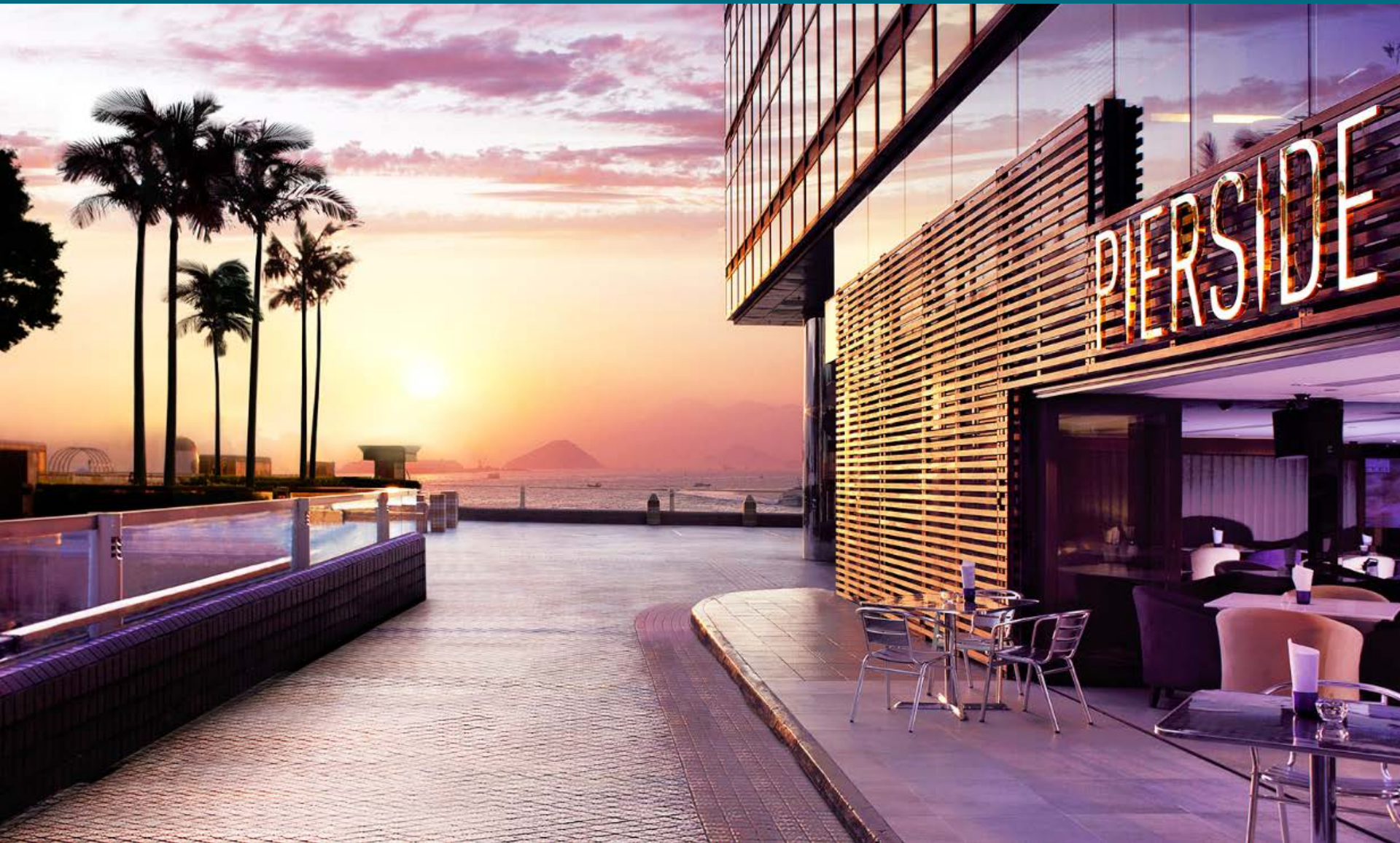
ROYAL PACIFIC
HOTEL



PIERSIDE BAR & RESTAURANT



ROYAL PACIFIC
HOTEL



PIERSIDE BAR & RESTAURANT

Signature Dish: Hervey Bay Seafood Pot



ROYAL PACIFIC
HOTEL



SATAY INN



ROYAL PACIFIC
HOTEL



SATAY INN

Signature Dish: Hainanese Chicken Rice



ROYAL PACIFIC
HOTEL



PARK DELI



ROYAL PACIFIC
HOTEL



PARK DELI



ROYAL PACIFIC
HOTEL





ROYAL PACIFIC
HOTEL

SPECTACULAR OCCASIONS

PACIFIC ROOM



ROYAL PACIFIC
HOTEL



PACIFIC ROOM



ROYAL PACIFIC
HOTEL



PACIFIC ROOM



ROYAL PACIFIC
HOTEL



PACIFIC ROOM



ROYAL PACIFIC
HOTEL



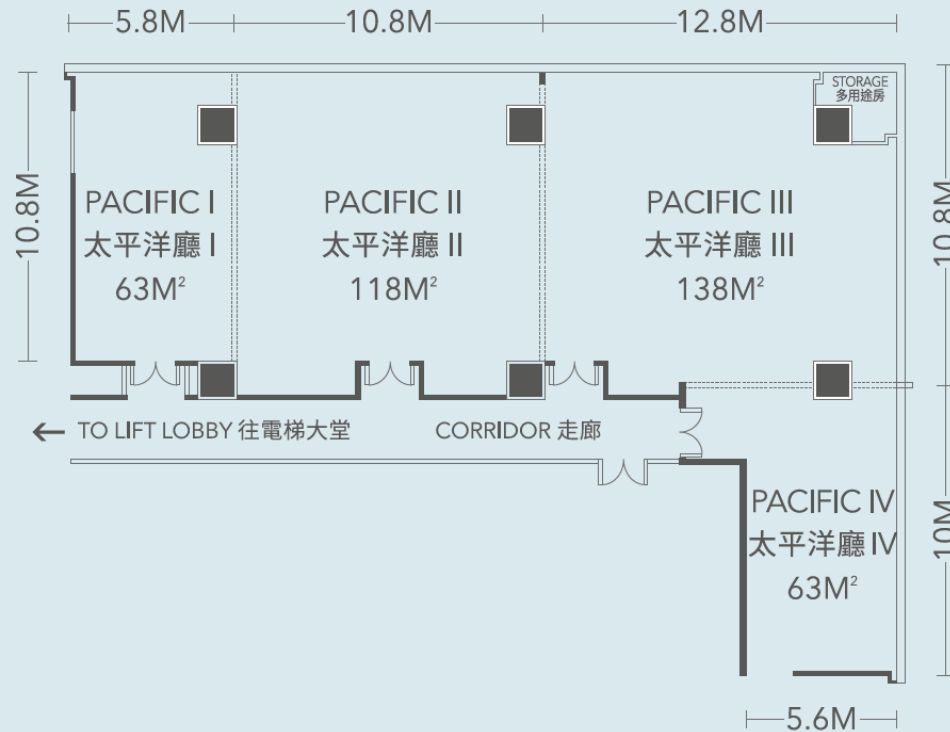
Seating Capacity:

Theatre: 270
Classroom: 186
U-shape: 62
Banquet: 264
Cocktail: 300

PACIFIC ROOM



ROYAL PACIFIC
HOTEL



Location : 9/F, Towers Wing
Size : 382 square meters
Ceiling Height : 2.3 meters

位置 : 海景翼9樓
面積 : 382 平方米
樓底高度 : 2.3米

IMPERIAL ROOM



ROYAL PACIFIC
HOTEL



IMPERIAL ROOM



ROYAL PACIFIC
HOTEL



Seating Capacity:

Theatre: 200

Classroom: 150

U-shape: 60

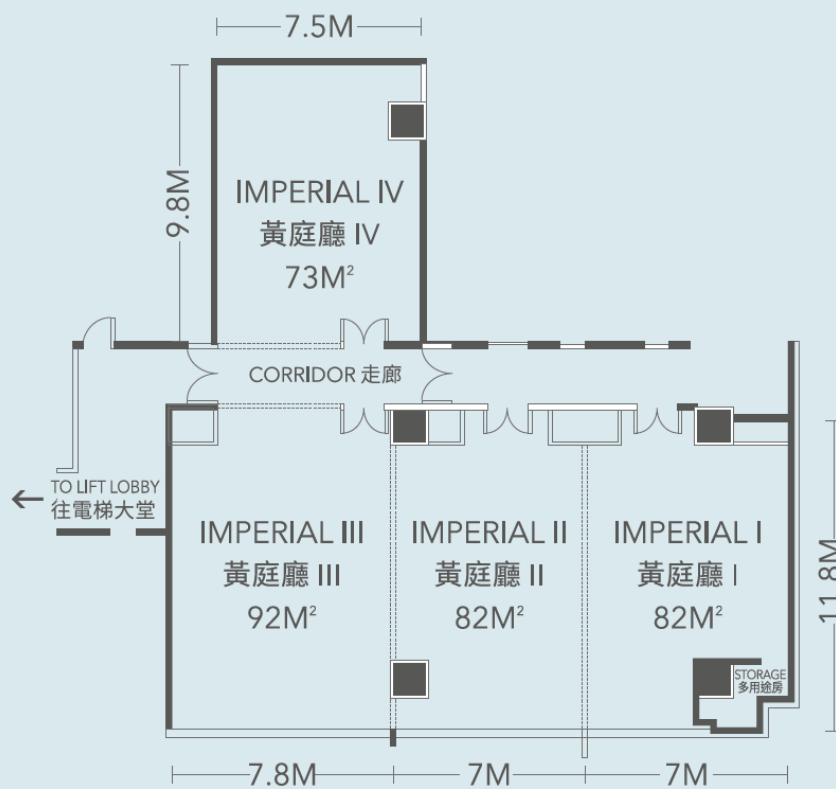
Banquet: 192

Cocktail: 220

IMPERIAL ROOM



ROYAL PACIFIC
HOTEL



Location : Mezzanine Floor, Towers Wing
Size : 329 square meters
Ceiling Height : 2.1 meters

位置 : 海景翼中層
面積 : 329 平方米
樓底高度 : 2.1 米



ROYAL PACIFIC
HOTEL

RECREATION · RELAXATION

JOGGING ROUTE



ROYAL PACIFIC
HOTEL



Kowloon Park's Opening Hours

- Park
5am – 12am
- Aviary & Bird Lake
6:30am – 6:45pm (Mar – Oct)
6:30am – 5:45pm (Nov – Feb)

Sports Centre

- 7am – 11pm
- Swimming Pool
6:30am – 12pm
1pm – 5pm
6pm – 10pm

Recommended Jogging Route

2.1km - - - - -

Walking Distance to Transit (from Hotel)

- China-Macau Ferry Terminal
2 minutes
- MTR Tsim Sha Tsui Station
10 minutes
- MTR Austin Station
5 minutes
- Star Ferry Pier
(to Central and Wanchai)
10 minutes



ROYAL PACIFIC
HOTEL

Royal Pacific Hotel

China Hong Kong City
33 Canton Road
Tsimshatsui, Kowloon
Hong Kong



RoyalPacificHotel



sinohotels



www.royalpacific.com.hk