

THE MURRAY

HONG KONG



NEW ENCOUNTERS. TIMELESS PLEASURES

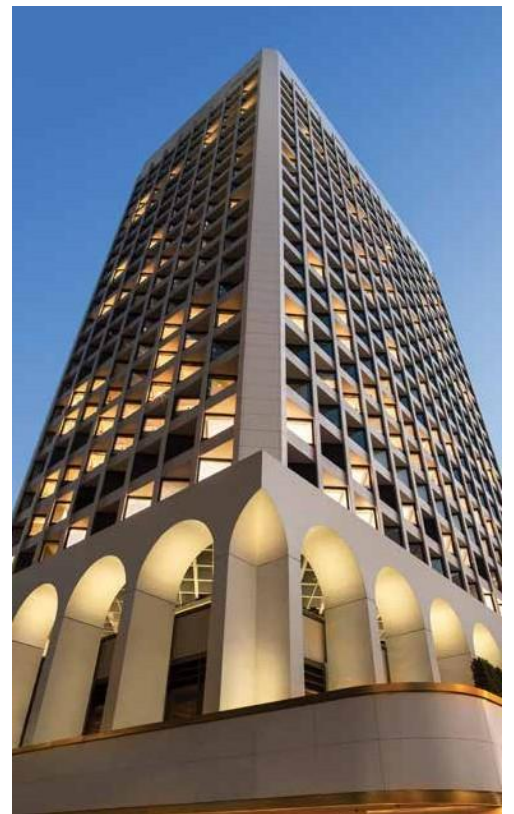
WELCOME TO THE MURRAY.
FORMERLY A PROMINENT SEAT OF GOVERNMENT,
NOW RE-MASTERED AS THE LAST WORD IN
CONTEMPORARY CHIC.

One of the great architectural prizes in Hong Kong SAR of China, the flagship 1960s building is as recognisable for the breathtaking archways that frame its entrance as it is notable in the city's remarkable history.

Beautifully restored and masterfully reconceived as a beacon of style by British architects Foster + Partners, the 336 room hotel adds a fresh dynamic to Hong Kong's most desirable of addresses. A new sense of glamour for the savvy traveller.

Raised high on Central District's Cotton Tree Drive on Hong Kong Island, and nestled beside eight hectares of verdant parkland, The Murray affords its guests not only definitive views of the city and The Peak, but also a sanctuary from the world below.

In short, The Murray takes Niccolo's uncompromising promise of "New Encounters. Timeless Pleasures" to a new level.



THE LEADING HOTELS
OF THE WORLD®

A NICCOLO HOTEL

DESIGNED TO BE THE DEFINITIVE CITY SANCTUARY, EACH OF OUR 336 GUEST ROOMS EVOKE THE TWIN DELIGHTS OF COMFORT AND CALM.

GUEST ROOMS

From 38 to 50 square metres, The Murray's guest rooms are generously proportioned living spaces. Each comes with a beautifully designed en-suite wet area, featuring rare marble-lined walls and floor, as well as luxurious grooming amenities by Grown Alchemist. N2 Grand and N3 Grand Deluxe Rooms offer a separate bath and shower room. With complimentary high speed Wi-Fi, broadband internet access, Smart TVs, comprehensive bedside room controls and charging stations, our rooms offer state-of-the-art modern comfort and sophistication.

SUITES

From 75 to 225 square metres in size, The Murray's elegantly and generously well-appointed suites surpass for space and comfort - each with separate, sumptuously furnished living areas, a grand bathroom, walk-in closet and generously-stocked personal bar. With hypnotic views of Hong Kong's cityscape and the Park as well as an array of seamless technology, our suites are sure to please the most discerning of guests.

The eponymous 225 square metres Murray Suite, with its panoramic views of the city, and the 125 square metres Penthouse Suite provides the ultimate accommodation for well-heeled travellers used to the finest creature comforts.

Room Type	Dimension	
Superior	38 sqm	409 sqf
N1 Deluxe	47 sqm	506 sqf
N2 Grand	50 sqm	538 sqf
N3 Grand Deluxe	50 sqm	538 sqf
Explorer Suite	75 sqm	810 sqf
Signature Suite	75 sqm	810 sqf
Cotton Tree Suite	100 sqm	1,076 sqf
Park Suite	100 sqm	1,076 sqf
Penthouse Suite	125 sqm	1,345 sqf
The Murray Suite	225 sqm	2,422 sqf



N3 Grand Deluxe



Signature Suite



Explorer Suite



Park Suite

A NICCOLO HOTEL

FOR HONG KONG'S HOTTEST ROOFTOP WITH MESMERISING VIEWS, FOR THE MOST EXQUISITE CANTONESE DINING AND MODERN EUROPEAN CUISINE, FOR THE DEFINING AFTERNOON TEA RITUALS, THE FINEST WINES AND RAREST POURS - THE MURRAY IS WHERE LEADERS IN FASHION AND BUSINESS, SAVVY TRAVELLERS AND THE CITY'S COGNOSCENTI ARE NATURALLY DRAWN.

RESTAURANTS & BARS

Popinjays, our stunning rooftop restaurant, bar and terrace offers breathtaking views of the city, parks and The Peak from its exquisite dining terraces. Modern European cuisine, conceptual cocktails and international tapas dishes served at the bar, make this the venue of choice for Hong Kong's most discerning palates.

From daily specials inspired by the season's best to engaging tableside service and live carvings in the evening, The Tai Pan embraces modern bistro fare while spotlighting artisanal produce. With both indoor and pet-friendly outdoor seating at Cotton Tree Terrace, this is the perfect choice for business lunches or social dinners.

The Garden Lounge brings an elegant touch to the teatime experience. Either indoors or out on the terrace, world-class pâtissiers, baristas and brew masters serve contemporary afternoon teas with a twist.

MOMENTOUS OCCASIONS, IN CHARISMATIC SETTINGS AGAINST HONG KONG'S MOST PRESTIGIOUS BACKDROP. AND EXPERTISE TO REALISE EVERY EVENT HOST'S VISION.

NICCOLO ROOM

Our largest indoor venue, Niccolo Room plays host to weddings, conferences, exhibitions and other prominent, large gatherings. The room affords organisers considerable flexibility with a dividing system that enables up to eight smaller zones to be apportioned - a separate pre-function or cocktails area being two examples.

THE ARCHES

There are few, if any, event spaces like The Arches. Bordered by the unmistakable crescents of The Murray's archways, this lengthy, semi-outdoor, all-weather space is the perfect choice for runway shows, installations, product launches or, indeed, any other use an imaginative planner's mind may conjure.

THE MURRAY BOARD ROOMS

Two inter-connected, ultra-smart meeting rooms form The Murray Boardrooms. With cutting-edge equipment, including conferencing, and daylight cascading through oversized windows, these rooms are perfect for important private meetings and discrete special events. Naturally, the two rooms may be booked to create a larger venue or zoned spaces.



Popinjays



The Tai Pan



Garden Lounge



Niccolo Room



The Arches

A NICCOLO HOTEL