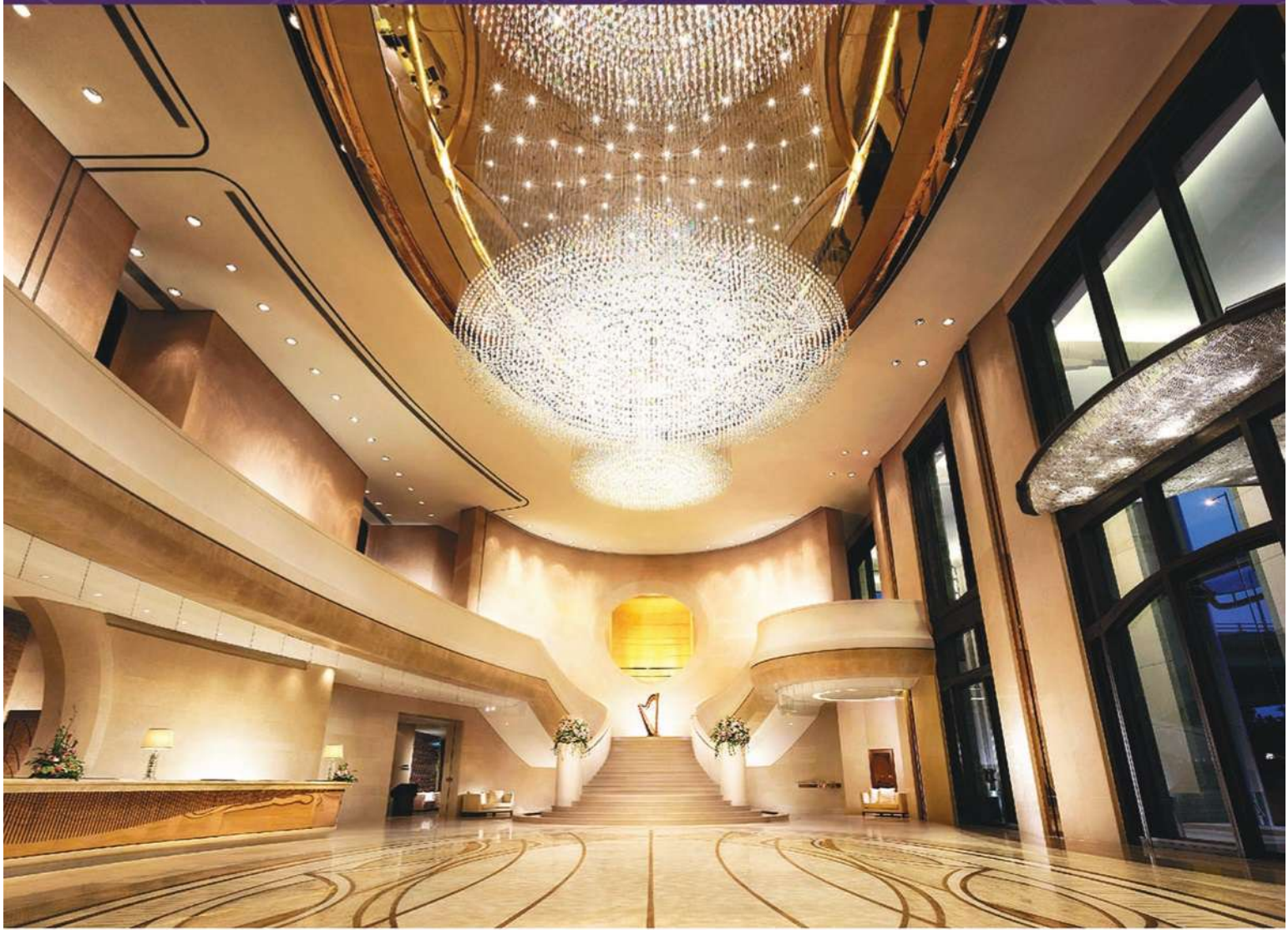




HOTEL FACT SHEET

HARBOUR GRAND HONG KONG





Location

Harbour Grand Hong Kong is a luxury property managed by Harbour Plaza Hotels & Resorts. Located in the heart of Hong Kong Island and ideally situated on the waterfront, guests will find themselves within walking distance of the convenient underground MTR transportation system, fashionable shopping malls and commercial offices in Causeway Bay, Wanchai and Central.

Accommodation

828 contemporary and modern designed hotel guestrooms, including 122 luxurious suites and seven floors of 202 Harbour Club rooms - all with spectacular Victoria Harbour and city landscape views. Private patios with heated Jacuzzis are available in selected hotel rooms. All suites and some rooms are equipped with pantries to cater for long staying guests.

Facilities

Business Centre

Providing full business facilities and equipment and wide-range secretarial services.

- Wired and wireless broadband internet service
- Courier/Postal service
- Laser printing
- Photocopying
- Typing

Rooms

- Features with wireless internet access, LCD TV with cable with satellite programming, in-house movie, personal safe and private bar
- Rainforest showerheads in all guestrooms and round/oval shaped bathtub in respectively rooms
- 24-hour private dining

Leisure & Hotel Shuttle

- 27m-long outdoor swimming pool, children's pool and Jacuzzi
- Fitness Centre
- SPA and Massage centre (offers body spa treatment, manicure and pedicure services)
- Hotel shuttle service to / from Airport Express Hong Kong Station, Wanchai, Causeway Bay and Cityplaza

Harbour Club Floors

Designed specially for the needs of business travellers. Executives staying at Harbour Club floors can enjoy the exclusive benefits:

- Personalized checkin and express check out
- Exclusive concierge services
- Welcome fruits with daily replenishment
- LCD TV in bathrooms of Harbour Club Floor guestrooms
- Complimentary breakfast, afternoon tea, evening cocktails are served in the Harbour Club Lounge
- Complimentary use of Boardroom at the Harbour Club Lounge (2 hours per room per day, subject to availability)
- Complimentary pressing for 2 pieces of clothing on arrival
- 10% discount on laundry and dry cleaning
- Complimentary 3:00pm late checkout (subject to availability)



Meeting & Banquet Facilities

A total of 12,685 square feet of meeting and banquet space fully equipped with the latest audio-visual technology and wireless internet access, include 6,200 square feet pillar-less Grand Ballroom with over 22 feet ceiling height and special lighting effect with over 256 colours and seven function rooms from 452 to 1,022 square feet - perfect for banquets, seminars, conferences and Annual General Meeting.

Telecommunications

- Wired and wireless broadband internet access#
- Facsimile*
- International Direct Dialing*
- Video conferencing facilities*

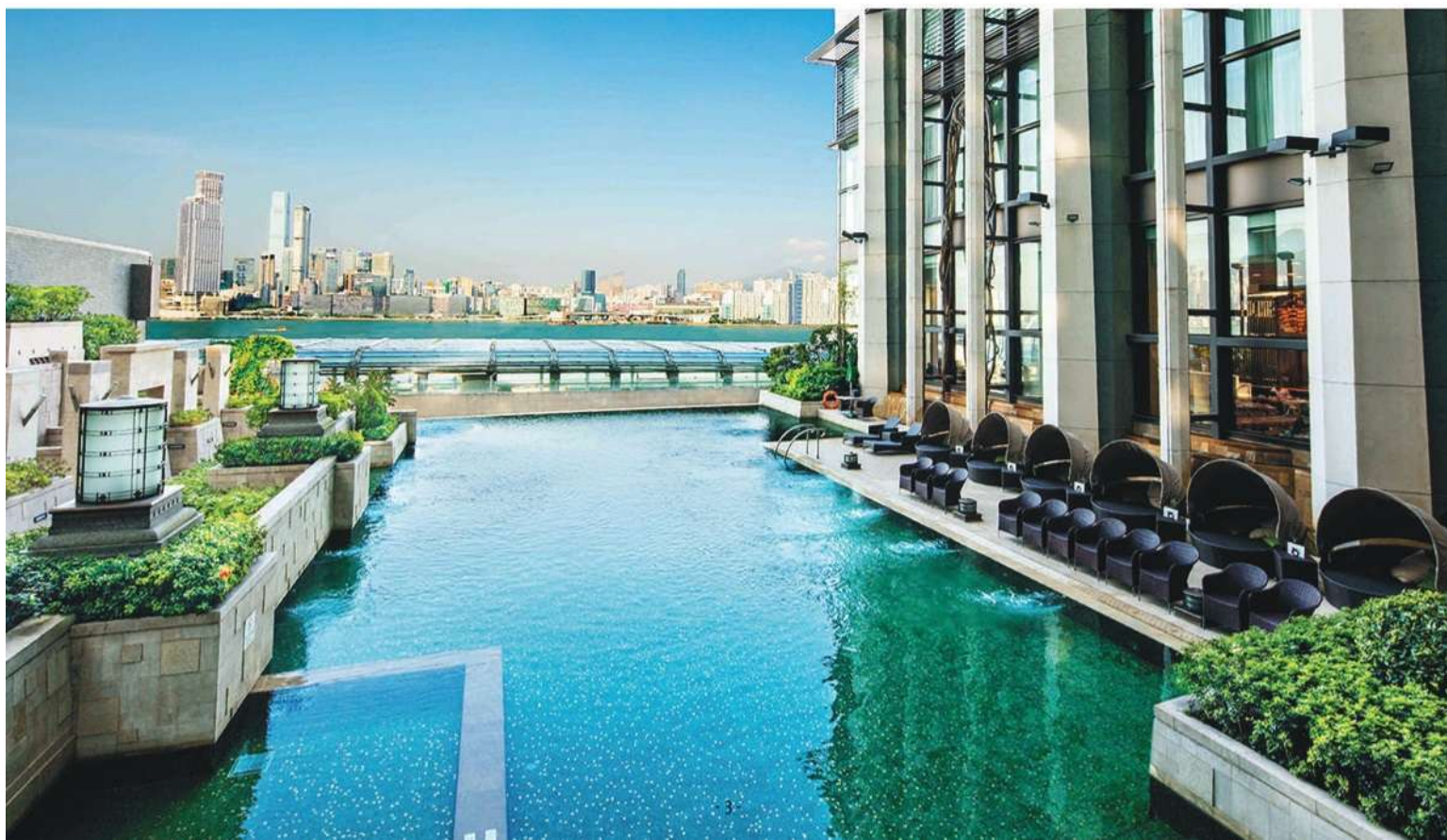
Equipment & Services

- Gobo lighting*
- Visualizer
- LCD Projector
- Built-in and portable screen
- Standing microphone and wireless microphone
- Portable stage
- Wireless broadband internet service#
- Meeting amenities
- LED Wall

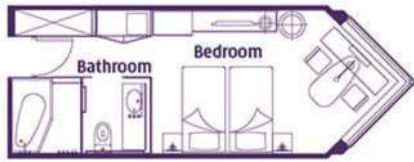
Complimentary use for maximum 80 devices

* Additional charge is required

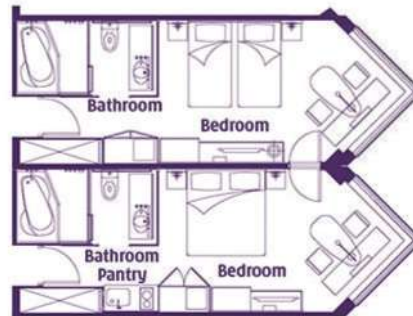
▲ Photos are for reference only



**Superior / Deluxe / Grand Deluxe
Harbour View Room**
Gross Area: 31 sq.m.



Connecting Room with Pantry
Gross Area: 62 sq.m.



Premier Harbour View Room
Gross Area: 35 sq.m.



Premier Harbour View Room with Patio
Gross Area: 55 sq.m.



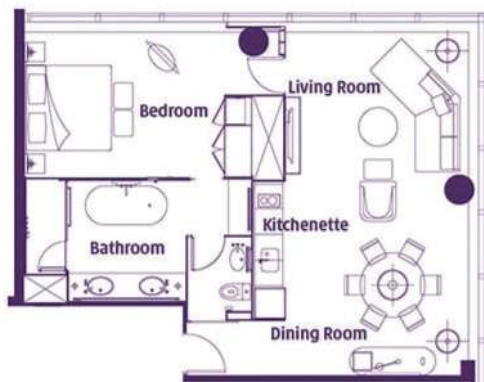
Executive Harbour View Suite (I)
Gross Area: 60 sq.m.



Executive Harbour View Suite (II)
Gross Area: 65 sq.m.



Premier Harbour View Suite
Gross Area: 94 sq.m.

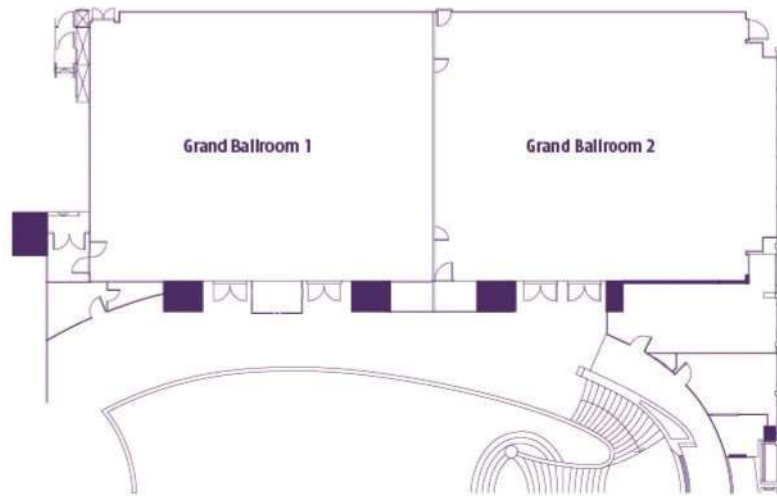


Two Bedroom Suite
Gross Area: 100 sq.m.

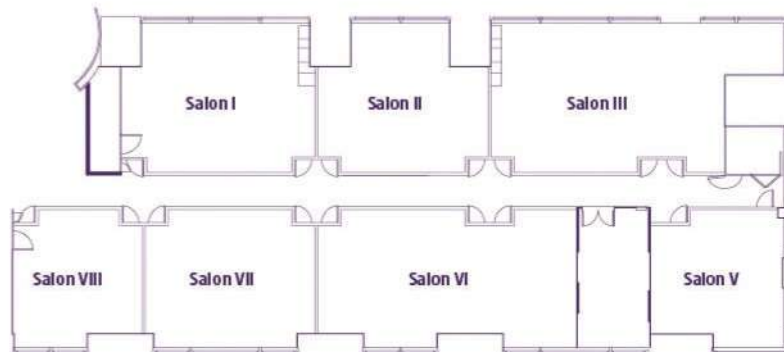


Floor Plans and Banqueting Capacity

Grand Ballroom, 1/F



Salon Rooms, 5/F



Venue	Size		Height		Round Table	Cocktail Reception	Theatre	U-Shape	Classroom	Boardroom
	Sq. ft.	Sq. m.	Feet	Metre						
Grand Ballroom, 1/F										
Grand Ballroom 1	3131	291	22	7	20	360	288/216*	54/51*	150/114*	66/60*
Grand Ballroom 2	3068	285	22	7	20	360	288/216*	54/51*	150/114*	66/60*
Grand Ballroom 1-2	6200	578	22	7	45	720	700/600*	132/129*	360/306*	144/132*
Pre-function Area	2099	195	-	-	-	-	-	-	-	-
Salon Rooms, 5/F										
Salon I	753	70	13	4	4	40	48/40*	24	42/36*	30
Salon II	599	56	13	4	3	30	62/53*	16	30/24*	26
Salon III	1022	95	13	4	5	60	102/90*	26	54/48*	32
Salon V	452	42	13	4	1	20	35/30*	16	21/18*	22/18*
Salon VI	917	85	13	4	4	50	100/85*	34	70/66*	38/32*
Salon VII	624	58	13	4	3	30	65/48*	22	36/33*	30/24*
Salon VIII	452	42	13	4	2	20	40/33*	16	22/18*	20/12*
Salon I-II	1356	126	13	4	6	70	104/96*	46	72/66*	50
Salon II-III	1625	151	13	4	8	90	118/110*	60	84/78*	64
Salon I-III	2378	221	13	4	13	130	168/150*	70	126/114*	92
Salon VI-VII	1539	143	13	4	6	80	156/138*	52	100/90*	56/50*
Salon VII-VIII	1076	100	13	4	4	50	110/95*	40	50/44*	44/38*
Salon VI-VIII	1991	185	13	4	9	100	200/160*	70	120/114*	80/68*
Salon I-VIII	6000	557	13	4	28	320	450/425*	72	216	84

* with Coffee Break Inside

Venue	Cocktail Reception	Banquet
Le188 [®] Restaurant & Lounge	200	133
Le188 [®] Terrace	50	-
Skyline Pavilion	150	120

Convenience

From	Time	By
Supermarket and 24 hours convenience store	3 minutes	Walking
Mass Transit Railway - Fortress Hill Station	5 minutes	Walking
Causeway Bay Shopping District	8 minutes	MTR/Car/Hotel Shuttle
HK Convention & Exhibition Centre	10 minutes	MTR/Car/Hotel Shuttle
Cityplaza Taikoo Shing Shopping Mall	10 minutes	MTR/Car/Hotel Shuttle
Pacific Place	12 minutes	MTR/Car/Hotel Shuttle
Central	15 minutes	MTR/Car/Hotel Shuttle
Airport Express Hong Kong Station	17 minutes	MTR/Car/Hotel Shuttle
Ocean Park	18 minutes	MTR/Car
Tai Kwun	18 minutes	MTR/Car
Repulse Bay	20 minutes	Car
Stanley Market & Local Beaches	25 minutes	Car
Hong Kong Disneyland	48 minutes	MTR/Car
Asiaworld-Expo	50 minutes	AEL/Car
Hong Kong International Airport	80 minutes	Airport Limousine/AEL/Car

Location Map



Dining

Le 188° Restaurant & Lounge (41/F)

Surrounded by floor-to-ceiling windows on 3 sides, Le 188° Restaurant & Lounge features an oyster bar and gourmet continental cuisine, treating diners an impressive 188-degree panoramic harbour view from the very top of the Harbour Grand Hong Kong. Its outdoor terrace is an ideal open air venue for gathering and chill out throughout the day.

Kwan Cheuk Heen (5/F)

Experience the delights of award winning Cantonese cuisine and dim sum in the backdrop of Hong Kong's signature harbour view.

Harbour Grand Café (3/F)

Harbour Grand Café offers an all-day a la carte menu and a lavish buffet selection serving the best of international cuisine. Enjoy breakfast, lunch and dinner in a relaxing and refreshing environment by the poolside.

Lobby Lounge (G/F)

Lobby Lounge is the superb place to sit back and relax with friends or enjoy high tea, and watch live-broadcast events with a glass. It's adjacent alfresco area provides a laidback atmosphere and is a perfect escape from the hustle and bustle of the city.

Nagomi Japanese Restaurant (G/F)

Enjoy an exclusive dining experience at Nagomi Japanese Restaurant, where authentic Japanese cuisine is made with jet-fresh ingredients handpicked by chefs, under the unique setting of Zen garden themed design.

www.harbourgrand.com/hongkong

Harbour Grand Hong Kong Limited
A member of Harbour Plaza Hotels and Resorts



23 Oil Street, North Point, Hong Kong (MTR Fortress Hill Station, Exit A)