



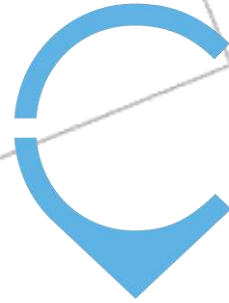
HYATT  
CENTRIC™  
VICTORIA HARBOUR  
HONG KONG



A panoramic view of the Hong Kong skyline at dusk, with numerous skyscrapers illuminated against a twilight sky. The water in the foreground is dark, with a double-decker ferry lit up with yellow and blue lights. A highway with traffic is visible on the left side of the image.

*Stunning Harbourfront Hotel  
in the heart of Hong Kong*





## ABOUT HYATT CENTRIC VICTORIA HARBOUR HONG KONG

With breathtaking views of Victoria Harbour, our city-center hotel in North Point is the perfect start to explore the mix of traditional and modern.

Discover local foodie favorites and photo-worthy spots in the neighborhood or take a stroll along the waterfront promenade right in front of the hotel.

Centrally located on Hong Kong Island and literally steps away from ferry to Kowloon, Hong Kong Trams and MTR station, you can access nearby business, shopping and entertainment areas with ease.

# FACILITIES



Complimentary  
High-speed WiFi



Digital  
Check-in



Restaurant  
On-Site



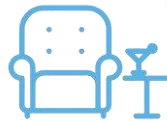
Meeting  
Facilities



Infinity  
Pool



Fitness  
Center



Victoria Harbour  
Lounge



For physically-  
challenged



Dog-friendly  
Areas

# HYGIENE MEASURES



Temperature check for all guests and employees



All staff and guest must wear a face mask at all times



Provide hand sanitizer, mask holder and wet disinfectant tissue



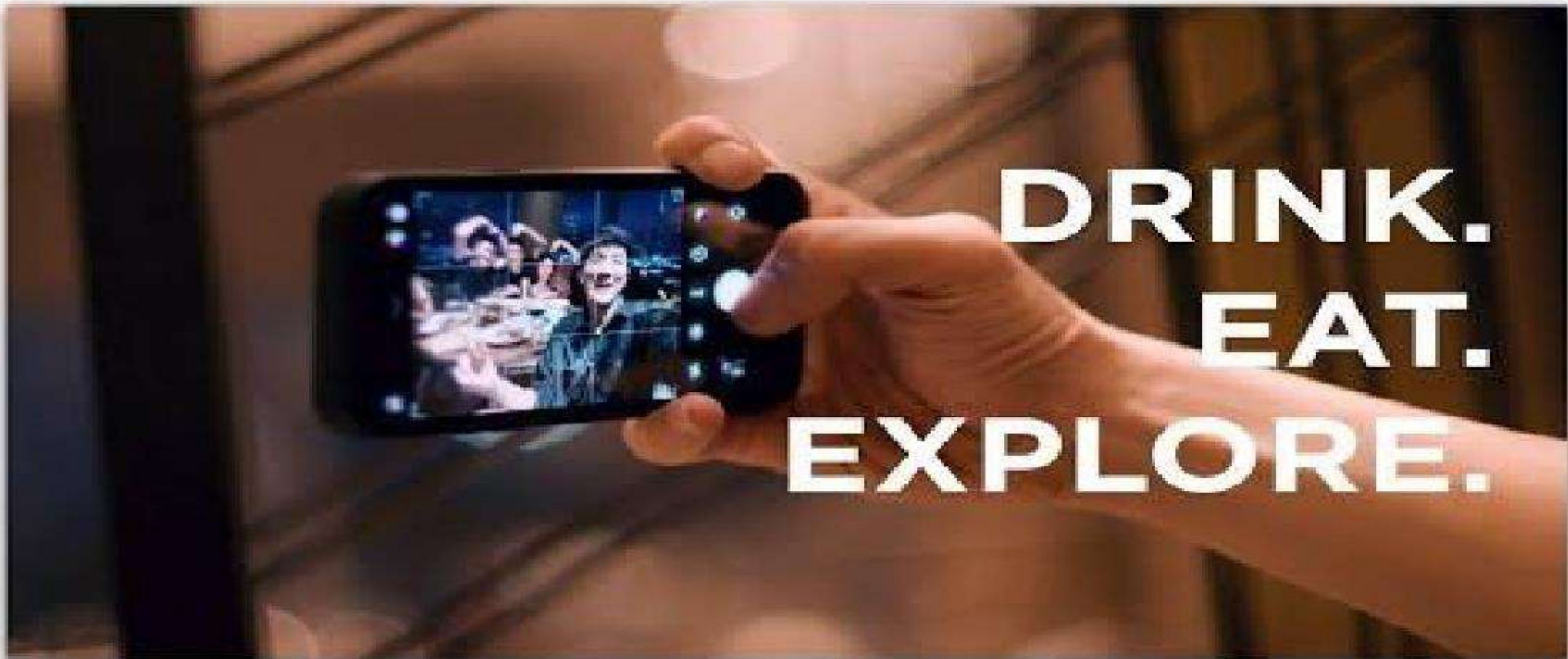
Disinfect all facilities frequently



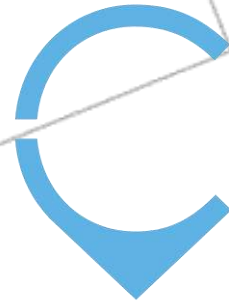
Sanitization for the room key, pen and umbrella handle after each use

[Click to watch the video](#)









*Something Unique... for all savvy explorers*

*Newest international chain-branded hotel on Island East*

*All 665 guest rooms and suites are with harbourview*

*Centrally located with high accessibility for business and leisure*

*Magnificent harbourview infinity pool and fitness center*

# ACCOMMODATIONS

Enjoy panoramic Victoria Harbourfront views as a backdrop with spacious design blending urban chic with comfort in our 665 rooms and suites.

Pamper yourself in our luxurious bathroom, with complimentary high-speed Wi-Fi and more.





# GUESTROOMS

- Complimentary high-speed Wi-Fi
- 49-inch LED TV
- Sophisticated sound bar system
- Bathroom with rain shower
- Locally designed bathroom amenities
- Bathrobes and slippers
- Electronic safe
- Electric window blinds
- USB sockets
- In-room refrigerator
- Tea making facility
- Nespresso coffee machine
- Hairdryer



# 1 King Bed

With stunning views of Victoria Harbourfront, enjoy this 23.5-square-metre modern guestroom with one king bed, 49-inch LED TV and a walk-in shower.

- Complimentary high-speed Wi-Fi
- Tea making facility & Nespresso coffee machine
- Complimentary two bottles of mineral water with daily replenishment





## 2 Twin Beds

Wake up to views of Victoria Harbourfront in this 23.5-square-metre guestroom, outfitted with two twin beds, 49-inch LED TV and a walk-in shower.

- Complimentary high-speed Wi-Fi
- Tea making facility & Nespresso coffee machine
- Complimentary two bottles of mineral water with daily replenishment



# 1 King Bed Harbour View

Inside this 24-square-metre stylish guestroom with a king bed, gaze out of the window for a stunning view of Victoria Harbourfront. Relax in this room with a 49-inch LED TV, a walk-in shower and a roll-out sofa bed.

- Complimentary high-speed Wi-Fi
- Tea making facility & Nespresso coffee machine
- Complimentary two bottles of mineral water with daily replenishment





## 2 Twin Beds Harbour View

Indulge in the stunning views of Victoria Harbourfront in this 24-square-metre guestroom with two twin beds. Enjoy the facilities of a 49-inch LED TV, roll-out sofa bed and a walk-in shower.

- Complimentary high-speed Wi-Fi
- Tea making facility & Nespresso coffee machine
- Complimentary two bottles of mineral water with daily replenishment



# 1 King Bed Harbour View Deluxe

With views of Victoria Harbourfront, this 31-square-metre guestroom with a king bed feels like an elegant home away from home. Enjoy the harbour view bathroom with a rain shower, a bathtub and a 49-inch LED TV, among other luxurious amenities.

- Harbour view bathroom with rain shower, bathtub and TV
- Complimentary high-speed Wi-Fi
- Tea making facility & Nespresso coffee machine
- Complimentary two bottles of mineral water with daily replenishment





## 2 Twin Beds Harbour View Deluxe

Relish in this spacious 31-square-metre guestroom, outfitted with two twin beds, stunning views of Victoria Harbourfront, harbour view bathroom with a rain shower and bathtub, and other luxurious amenities.

- Harbour view bathroom with rain shower, bathtub and TV
- Complimentary high-speed Wi-Fi
- Tea making facility & Nespresso coffee machine
- Complimentary two bottles of mineral water with daily replenishment



# King Suite with 1 King Bed

Treat yourself to a luxurious suite with 46-square-metre space, stunning views of Victoria Harbourfront, and a cosy living room.

- Complimentary high-speed Wi-Fi. Tea making facility and Nespresso coffee machine
- Complimentary Victoria Harbour Lounge Access including breakfast, afternoon tea, and evening cocktail. Also, include complimentary use of boardroom for two hours per room per day (subject to availability)





# Victoria Harbour Suite with 1 King Bed

Spread out in this 54-square-metre suite that features a bedroom with a king bed, a cosy living room, stunning panoramic views of Victoria Harbour, 65-inch LED TV, a bathtub with walk-in shower and a private furnished balcony.

- Complimentary high-speed Wi-Fi. Tea making facility and Nespresso coffee machine
- Complimentary Victoria Harbour Lounge Access including breakfast, afternoon tea, and evening cocktail. Also, include complimentary use of boardroom for two hours per room per day (subject to availability)



# OTHER SERVICES



Concierge  
Service



Room  
Service



Business  
Service



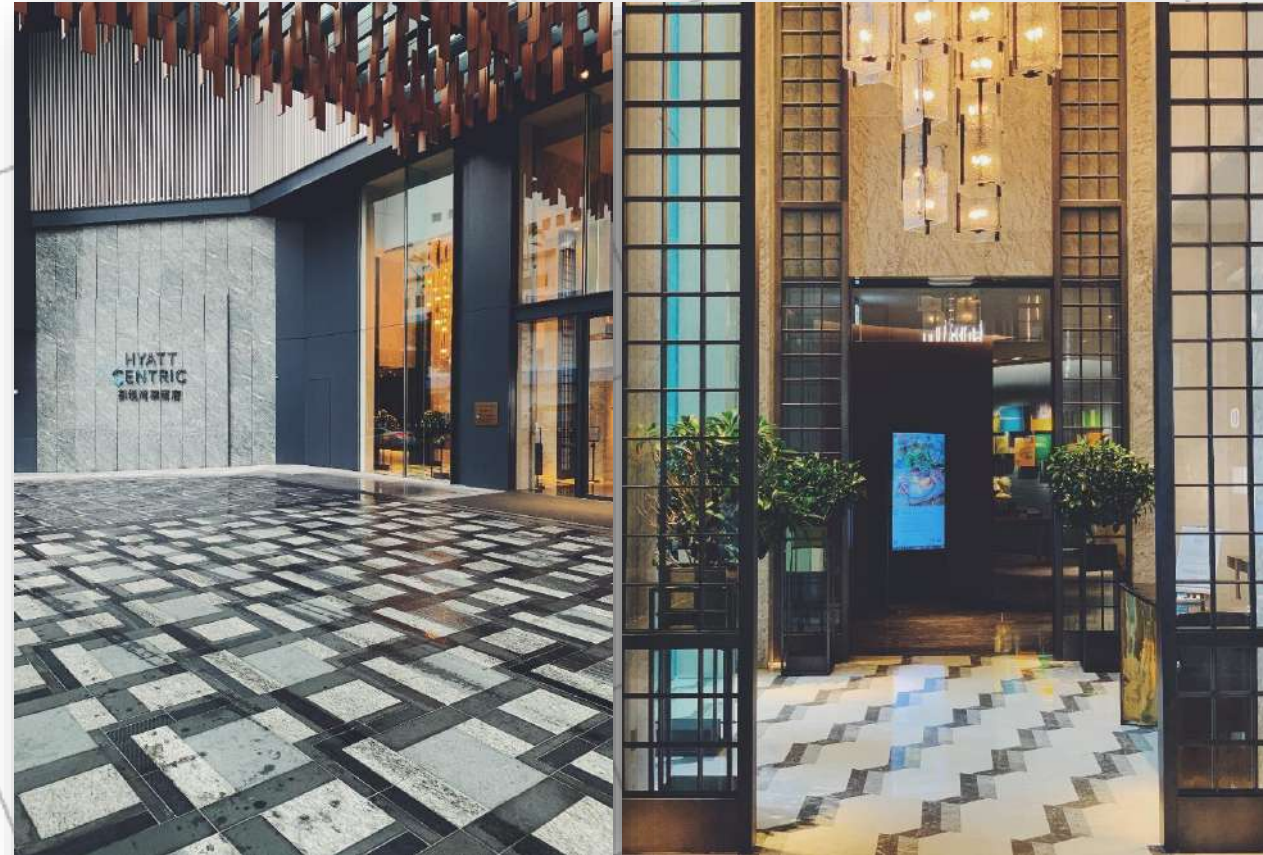
Laundry  
Service



Valet  
Parking



Hotel  
Limousine





# VICTORIA HARBOUR LOUNGE

## Privileges & Facilities:

- Rooms with the access with Victoria Harbour Lounge are located on 20/F or above
- Check-in & Check-out service in the spacious Victoria Harbour Lounge
- Complimentary breakfast from 6:30 AM to 10:30 AM at The Farmhouse (West Tower 2/F)
- Refreshment from 3:00 PM to 5:30 PM at Victoria Harbour Lounge
- Evening cocktails with canapés from 6:00 PM to 8:00 PM at Victoria Harbour Lounge
- Meeting space accommodating up to 8 pax

*Opening Hours: 12:00 NN – 9:00 PM Daily*



# RESTAURANTS & BARS

*Whether you're looking for a cosy atmosphere or breathtaking panoramic views of Victoria Harbourfront, enjoy delicious food at Cruise and The Farmhouse.*



CRUISE  
(23/F West Tower)

A sophisticated rooftop restaurant and bar with an outdoor terrace providing panoramic views of the Victoria Harbour



THE FARMHOUSE  
(2/F West Tower)

All-day “Farm-to-table” buffet restaurant with indoor and outdoor seating overlooking the Victoria Harbour



THE FARMHOUSE DELI  
(2/F West Tower)

Offering freshly-made pastries and cakes to accompany with premium coffee or a wide range of teas



# EVENTS & WEDDINGS

- Provide versatile solutions for indoor and outdoor events at the centre of the city, with mesmerizing harbour views, convenient waterfront location and proximity to MTR station, Ferry Pier and Central – Wan Chai Bypass.
- With attentive service and dynamic dining options, perfect for small-scale executive meeting and events.

*A total of 1,400m<sup>2</sup> (15,000 ft<sup>2</sup>) of event space (included both indoor & outdoor venues), all equipped with latest technology and communications support, spacious and comfortable seating.*



# LOCATION

## PRIME LOCATION

Short walk from North Point's Ferry Pier and MTR station (Island Line and Tseung Kwan O Line).

Only 5 minutes' drive from Central through the Central-Wanchai bypass, while the Hong Kong International Airport and Airport Express Line (Hong Kong Station) are just 45-50 minutes' and 15 minutes' drive from the hotel respectively.

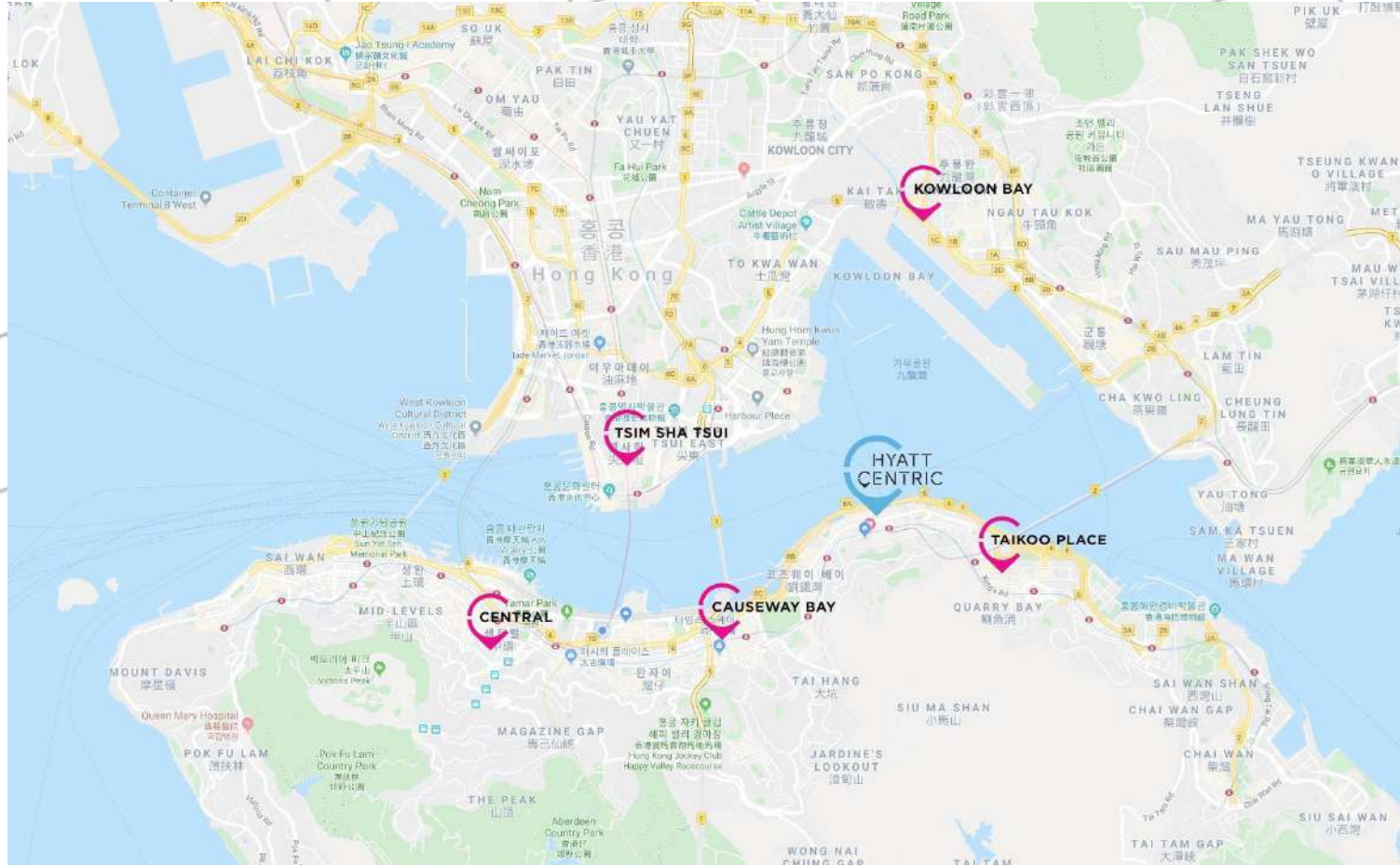
Bus, Mini-bus & Tram stop also within 5 minutes walk.





# BUSINESS & LEISURE

*Located on the eastern side of Hong Kong Island, the hotel is a new hub for both business and lifestyle enjoyment.*



# RECREATIONAL FACILITIES 23/F (East Tower)

## 25-metre outdoor rooftop infinity pool

Allow yourself to recharge at our rooftop infinity pool. Sip, snack and relax on a beach chair, and enjoy the spectacular vista of Victoria Harbourfront.

- Hours: 6:30 AM to 10:00 PM (1 April to 30 November),  
7:00 AM to 8:00 PM (1 December to 31 March)



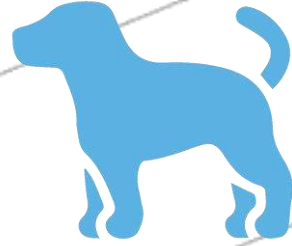
## 24-hour Fitness Center

The ICAROS flying machine combines fitness and virtual reality to create exciting and effective exercise experiences. The muscle stimulation doubles and exercise burns 30% more calories on the machine.

- Sauna and steam rooms available







## DOG-FRIENDLY

We welcome dogs at Hyatt Centric Victoria Harbour Hong Kong.

Book our Dogcation package and enjoy a pampering stay with your fur baby. The package comes with a comfy dog bed and thoughtful amenities.

Explore around the dog-friendly areas at the hotel and the Neighbourhood, create remarkable moments with your fur babies inadvertently at North Point - an enchanting and energetic place full with human touches.

Weight Limits 30KG or lighter

# POINTS OF INTEREST

- Chun Yeung Street
  - Sunbeam Theatre
  - Tung Po Kitchen
  - North Point Ferry Pier
  - Ding Ding Tram
  - Lee Keung Kee North Point Egg Waffle
  - Duck Shing Ho Egg Rolls
- and more await you to explore...







## Instagrammable Spots at Hyatt Centric Hong Kong



Infinity Pool



Harbour View Room



Harbour View Deluxe Room



Cruise



YOU ARE HERE. NOW GO ANYWHERE.

HYATT CENTRIC VICTORIA HARBOUR HONG KONG  
1 North Point Estate Lane, North Point, Hong Kong, China  
[hyattcentrichongkong.com](http://hyattcentrichongkong.com)



Hyatt Centric Hong Kong



@hyattcentrichongkong



Options are endless when you stay in the middle of the action  
at Hyatt Centric Victoria Harbour Hong Kong